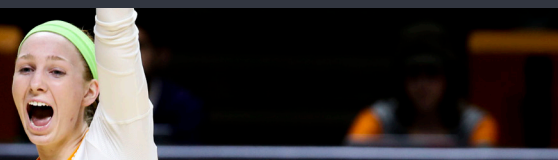




TENNESSEE

VOLLEYBALL

14 NCAA TOURNAMENT APPEARANCES » 6 COMBINED SEC TITLES » 20 ALL-AMERICANS » 22 20-WIN SEASONS



TENNESSEE (0-0) at TENNESSEE CLASSIC

AUG. 25-26 2017 » THOMPSON-BOLING ARENA » KNOXVILLE, TENN.

TENNESSEE VOLUNTEERS



Head Coach:
Rob Patrick
Record at UT:
397-235 (21st year)
2017 Record:
0-0, 0-0 SEC
Starters Returning: 5/1+

2016 FINAL TEAM STATS

	UT	SEC Rank	NCAA Rank
Hitting Pct.:	.253	5th	40th
Opp. Hitting Pct.:	.194	4th	125th
Kills/Set:	13.8	4th	t-45th
Assists/Set:	12.9	4th	48th
Aces/Set:	1.2	5th	154th
Digs/Set:	14.2	7th	213th
Blocks/Set:	2.3	7th	92nd

CATEGORY LEADERS

KILLS

#17 Tessa Grubbs
(320 Ks, 3.60 K/Set)

HITTING

#7 Erica Treiber
(.348 hit%, 2.58 K/Set)

ASSISTS

#11 Sedona Hansen
(1130 As, 11.19 A/Set)

SERVING

#7 Erica Treiber
(21 Aces, 0.21 SA/Set)

DIGGING

#6 Brooke Schumacher
(353 digs, 3.27 D/Set)

BLOCKING

#7 Erica Treiber
(107 Tot. Blks, 1.06 B/S)
#2 Alyssa Andreño
(69 Tot. Blks, 0.75 B/S)

VS

TENNESSEE CLASSIC TEAMS

WESTERN MICHIGAN

2016 Record: 12-19

Hitting Pct.: .214

Opp. Hitting Pct.: .217

Kills/Set: 12.9

Assists/Set: 12.2

Aces/Set: 1.1

Digs/Set: 15.5

Blocks/Set: 2.0

WOFFORD

2016 Record: 17-15

Hitting Pct.: .182

Opp. Hitting Pct.: .198

Kills/Set: 12.8

Assists/Set: 12.1

Aces/Set: 1.4

Digs/Set: 14.4

Blocks/Set: 1.8

GEORGE WASHINGTON

2016 Record: 11-18

Hitting Pct.: .213

Opp. Hitting Pct.: .221

Kills/Set: 12.0

Assists/Set: 11.0

Aces/Set: 1.2

Digs/Set: 11.8

Blocks/Set: 2.4

2017 SCHEDULE & RECORD

THE RECORD

OVERALL RECORD:	0-0
SEC	0-0
NON-CONFERENCE	0-0
HOME	0-0
AWAY	0-0
NEUTRAL	0-0

► THE SCHEDULE

DATE	OPPONENT	TIME/RESULT
Aug. 25	Western Michigan ¹	7 p.m.
Aug. 26	Wofford ¹	12 p.m.
	George Washington ¹	7 p.m.
Sept. 1	vs. Texas San Antonio ²	5:30 p.m.
Sept. 2	vs. West Virginia ²	1 p.m.
	@ Minnesota ²	7 p.m.
Sept. 8	@ Florida State ³	6 p.m.
Sept. 9	vs. Florida A&M ³	1 p.m.
Sept. 10	@ Kennesaw State	3 p.m.
Sept. 15	Marshall ⁴	7 p.m.
Sept. 16	USC-Upstate ⁴	10 a.m.
	Furman ⁴	7 p.m.
Sept. 20	@ Arkansas*	9 p.m.
Sept. 24	Mississippi State*	1:30 p.m.
Sept. 29	@ Florida*	7 p.m.
Oct. 1	@ South Carolina*	1 p.m.
Oct. 4	Auburn*	8 p.m.
Oct. 8	Alabama*	1:30 p.m.
Oct. 11	@ Georgia*	7 p.m.
Oct. 15	Missouri*	1:30 p.m.
Oct. 22	@ Kentucky*	1:30 p.m.
Oct. 27	@ Texas A&M*	7:30 p.m.
Oct. 29	@ LSU*	2 p.m.
Nov. 3	South Carolina*	7 p.m.
Nov. 5	Florida*	1:30 p.m.
Nov. 9	@ Auburn*	8 p.m.
Nov. 12	@ Alabama*	2 p.m.
Nov. 17	Ole Miss*	7 p.m.
Nov. 19	Georgia*	1:30 p.m.
Nov. 24	LSU*	7 p.m.

* Southeastern Conference game

1 - Tennessee Classic; 2 - Diet Coke Classic; 3 - FSU-FAMU Classic; 4 - Rocky Top Invitational.

All times Eastern

SCHEDULE NOTES

Tennessee is on national TV four times. The Vols ESPNU matches are Sept. 20 at Arkansas (7 p.m. Eastern) and Oct. 11 at Georgia (7 p.m.). Matches on the SEC Network include: Oct. 1 at South Carolina (1 p.m.) and Oct. 4 Auburn (8 p.m.)

Tennessee is scheduled for 15 home matches at Thompson-Boling Arena this season, starting with the annual Tennessee Classic.

During non-conference action, the Vols play three teams for the first time in program history: Florida A&M, West Virginia, and South Carolina-Upstate

KEY STORYLINES

WHO'S BACK?

The Vols are returning 5+1 starters this season: MH Erica Treiber, S Sedona Hansen, DS/L Brooke Schumacher, OH/RS Kanisha Jimenez, and MH Alyssa Andreño. Treiber was named an AVCA Honorable Mention All-American led the team in blocks with 107.

Hansen racked up 1,130 assists as a freshman finishing 3rd in the SEC and Schumacher averaged 3.14 digs per set totaling 317.

WHO'S NEW?

Tennessee has a decent roster in 2017, coming in with 17 players

Six players are new to the squad: freshmen Madison Coulter, Keyton Kinley, Gabrielle Peitsch, Olivia Schwamberger and Callie Williams and junior transfer from Georgia Southern Stephanie Spencer.

Spencer, who in two years at Georgia Southern, posted 423 kills, 14 serves aces, 261 digs and 58 blocks. All the newcomers joined the squad during summer school to participate in team-led training.

SEC NETWORK+

Tennessee will be making nine appearances on the SEC Network+. The Vols matches are Aug. 25 when they host Western Michigan (7 p.m.), Sept. 15 when they host Marshall (7 p.m.), Sept. 29 at Florida (7 p.m.), Oct. 8 vs. Alabama (1:30 p.m.), Oct. at Kentucky (1:30 p.m.), Oct. 29 at LSU (2 p.m.), Nov. 9 at Auburn (8 p.m.), Nov. 12 at Alabama (2 p.m.) and Nov. 24 vs. LSU (7 p.m.)



SOCIAL



Twitter & Instagram

@Vol_VBall



Facebook Page

Facebook.com/UTVolleyball

MEDIA INFORMATION

MEDIA CREDENTIALS

Requests for working media credentials should be directed to volleyball contact Maurice Williams. Those wishing to attend a match are asked to call the Media Relations Office to be placed on the pass list.

Photo credentials will be issued to accredited photographers or those individuals on special assignment. Because there are designated areas for photographers, we ask that anyone shooting a volleyball match at Thompson-Boling Arena check with Maurice prior to the start of the contest.

RADIO

Thompson-Boling Arena is available for radio broadcasts through UT Telephone Services. In order to access these lines, those interested in broadcasting a particular match need to inform the UT Athletics Media Relations Office in writing at their earliest convenience and no later than three weeks prior to the contest. Radio stations also will need to contact UT Telephone Services at (865) 974-3121 to order a telephone line for use at the contest(s).

STATISTICAL SERVICES

Services provided include statistics generated from the StatCrew computer program. Match statistics will be handed to all attending members of the media and sports information personnel after every game. Following the match, final statistics will be emailed to the visiting sports information director's email list.

INTERVIEWS

Interviews will be available following the match after a 10-minute cooling-off period. Media wishing to interview the coaches or any players other than on match days are required to set up interviews with 24 hours notice through Maurice Williams in the UT Media Relations Office.

MEDIA RELATIONS INFORMATION

Overnight Mail Address

1551 Lake Loudon Blvd.
Brenda Lawson Center, Ground Floor
Knoxville, TN 37996

Maurice D. Williams

Office Phone: 865-974-8876

Cell: 803-842-1279

Fax: 865-974-8875

Email: mowill@utk.edu

FOLLOW ONLINE

Website

UTSports.com/volleyball

Twitter

@Vol_Vball

@RobPatrickUT

Facebook

Facebook.com/UTVolleyball

Instagram

Vol_Vball

YouTube

YouTube.com/UTSportsTV



2017 TENNESSEE ROSTER

No	Name	Ht	Pos.	Class	Hometown/High School/Last College
0	Keyton Kinley	DS/L	5-6	Fr.	Lexington, Ky./Lafayette Senior HS
1	Stephanie Buss	MB	6-1	Sr.	Sioux Falls, S.D./Lincoln HS/Cal State Fullerton
2	Alyssa Andreno	MH	6-2	So.	Stafford, Va./Brooke Point HS
3	Madison Coulter	OH	5-11	Fr.	Maryville, Tenn./Maryville HS
4	Asha Phillips	DS	5-5	So.	Murfreesboro, Tenn./Siegel HS
6	Brooke Schumacher	DS/L	5-4	Jr.	Hartford, Wis./Hartford Union HS
7	Erica Treiber	MH	6-1	Jr.	Unionville, Mich./Unionville-Sebewaing Area HS
8	Callie Williams	S	5-9	Fr.	Waco, Texas/Midway HS
10	Breana Jeter	OH	6-1	R-So.	Solon, Ohio/Solon HS
11	Sedona Hansen	S	5-8	So.	Wrightwood, Calif./Serrano HS
12	Gabrielle Peitsch	MH	6-2	Fr.	Ellicott City, Md./Marriotts Ridge HS
13	Kanisha Jimenez	OH/RS	6-1	Sr.	Toa Baja, Puerto Rico/Academia Discipulos de Cristo
14	Kendra Turner	OH	6-1	Sr.	LaPlace, La./Riverside HS
17	Tessa Grubbs	OH	6-3	So.	Tega Cay, S.C./Fort Mill HS
18	Mackenzie Cooler	S	6-1	Sr.	Ridgeland, S.C./Bluffton HS/Charleston
19	Stephanie Spencer	OH	6-1	Jr.	North Canton, Ohio/Jackson HS/Georgia Southern
28	Olivia Schwambeger	MH	6-3	Fr.	Cincinnati, Ohio/Anderson HS

COACHING STAFF

Head Coach: Rob Patrick (Miami [Ohio], '83)

Record at Tennessee (Years): 397-233 (21st)

Overall Record: Same

Assistant Coach: AJ Bonetti (Second Season)

Assistant Coach: Nikki Dailey (First Season)

Director of Operations: Kevin Cardoza (Second Season)

Volunteer Assistant Coach: Kevin Cook (First Season)

Volleyball Office Phone: (865) 974-4275

PRONUNCIATION GUIDE

Alyssa Andreno	Ann-DREE-no
Kanisha Jimenez	kah-NEE-sha he-MEN-ez
Gabrielle Peitsch	Pyeh
Asha Phillips	Ash-uh (Not Aw-shuh)
Brooke Schumacher	Shoo-MOCK-er
Olivia Schwambeger	Shwam-ber-ger
Erica Treiber	TRY-ber

TEAM INFORMATION

2016 Record: 17-14

SEC Record (Finish): 7-11 (t-7th)

NCAA Finish (AVCA Rank): -- (NR)

Starters Returning/Lost: 4 + 1

MH Alyssa Andreno, S Sedona Hansen, OH Kanisha Jimenez, MH Erica Treiber

L Brooke Schumacher

Starters Lost: 2

MB Raina Hembry, OH Bri Holmes

Newcomers: 6

5 Freshmen, 1 Transfer

Competition Facility: Thompson-Boling Arena

Practice Facility: Joan Cronan Volleyball Center

► BY THE NUMBERS

3

» Number of wins Coach Patrick needs to reach his 400th career win and become the seventh SEC Head Volleyball Coach with over 400+ career wins.

632

» In his 20 years as the head coach at Tennessee Coach Patrick has coached in a total of 632 game as he looks to record his 400th career win.

16

» Under Coach Patrick the Vols have had 16 winning season which includes nine appearances in the NCAA Tournament.

TEAM NOTES

RETURNING STARTERS

- Tennessee is returning five starters plus libero: junior MH Erica Treiber, sophomore setter Sedona Hansen, junior DS/L Brooke Schumacher, senior OH/RS Kanisha Jimenez and sophomore middle hitter Alyssa Andreno.
- Treiber:** Started 30 matches for the Vols in 2016, ranking eighth in the SEC in hitting percentage (.348) and ranking third on the team with 2.58 kills per set. She also led Tennessee with 107 blocks, averaging 1.06 per set to rank ninth in the SEC.
- Hansen:** Racked up 1,130 assists as a freshman last season, sitting third in the SEC and 19th in all of Div. I with 11.19 assists per set. She notched 50 assists three times, including a career-high 56 at Western Michigan.
- Schumacher:** Averaged 3.14 digs per set in 2016, totaling 317 digs overall in 101 sets played. She had 18 matches in which she racked up double-digit digs – including a career-high 21 against LSU.
- Jimenez:** Started 10 matches, playing in 24 total. She was fourth on the team with 36 service aces on the season, and she averaged 1.67 digs and 1.00 kills per set.
- Andreno:** Started in 18 matches for the Vols last season, seeing action in 92 sets. She averaged 1.64 kills per set and hit .265 for the season, while also ranking third on the team with 69 total blocks.

MORE RETURNING BIG TIMERS

- In addition to the returning starters, two more players had significant playing time last season: sophomore OH Tessa Grubbs and senior OH Kendra Turner.
- Grubbs:** Ranked seventh in the SEC in points (4.06 per set) and eighth in kills (3.60 per set) in 2016. She hit .275 for the season and was second on the team with 44 service aces.
- Turner:** Averaged 2.14 kills per set in 2016, hitting .255 in 25 matches played. She also had 30 total blocks as a reserve.

DEFENSIVE OPTIONS

- Junior **Brooke Schumacher** and sophomore **Asha Phillips** both return for Tennessee this season on the defensive side of the ball.
- Schumacher averaged 3.14 digs per set in 2016 (317 digs total), playing in 101 sets over 29 matches. She had double-digit digs 18 times – including a career-high 21 against LSU.
- Phillips, out of Siegel High in Murfreesboro, Tenn., averaged 1.67 digs per set during last season's DISH Tennessee Classic.
- They are joined by freshman Keyton Kinley, who was a Prep Volleyball All-American at Lafayette Senior High School in Lexington, Ky.

TOPS IN THE SEC

- The Vols ranked in the top five in the conference last season in: opponent hitting percentage (fourth, .194), assists (fourth, 12.91 per set), kills (fourth, 13.83 per set), hitting percentage (fifth, .253), and service aces (fifth, 1.24 per set).
- Sedona Hansen** was third in the SEC and 19th in the NCAA in assists (11.19 per set) last season.
- Erica Treiber** was eighth in the SEC in hitting percentage (.348) and ninth in blocks (1.06 per set) last season.

- Tessa Grubbs** was eighth in the SEC with 3.60 kills/set in 2016. She is also seventh with 4.06 points per set.

THE FRESHMAN FIVE

- Head coach Rob Patrick welcomes five freshmen to the fold this season: defensive specialist **Keyton Kinley**, outside hitter **Madison Coulter**, setter **Callie Williams**, middle hitter **Gabrielle Peitsch** and middle hitter **Olivia Schwamberger**.
- Kinley was a Prep Volleyball All-American and a two-time Prep Volleyball Defensive Dandy.
- Coulter was named Blount County MVP and Hitter of the Year as a senior.
- Williams was a First Team Under Armour All-American, and she won three state titles at Bishop Lynch High before playing at Midway High as a senior.
- Peitsch was First Team All-Howard County and Team Impact Player of the Year in 2015.
- Schwamberger was a three-time First Team All-Conference selection and was on both the Under Armour Watch List and Prep Volleyball's Senior Aces.

SETTING FIVE

- Sedona Hansen** racked up 1,130 assists as a freshman last season, sitting third in the SEC and 19th in all of Div. I with 11.19 assists per set.
- Hansen had three 50-assist performances in 2016, including a career-high 56 at Western Michigan.
- Her assist total ranks fourth-most by a Vol a season in the 25-point rally scoring era (since 2008). Third on the list is Lexi Dempsey's 1,181 in 2015.
- Tennessee has two other setters on the roster this season: senior **Mackenzie Cooler** and freshman **Callie Williams**. Cooler saw action in 10 matches as a reserve in 2016, and Williams was an Under Armour First Team All-American.

TRANSFERRING

- Outside hitter **Stephanie Spencer** joins the Volunteers this season after transferring from Georgia Southern, where was ranked second on the team in kills as a freshman.
- She averaged 2.22 kills per set that season, and she racked up a career-high 22 kills against Georgia.
- As a sophomore, Spencer had a career-high 18 digs at Louisiana.
- In 2015, she was named to the Sun Belt Commissioner's List.

LINEUP NOTES

- UT played with 14 starting lineups last season.
- Coming into her junior season, **Erica Treiber** has started all but two matches of her UT career.

FIVE SIGN FOR 2017

- Five players inked with the Vols during the early signing period: **Callie Williams** (S, Waco, Texas), **Keyton Kinley** (DS/L, Lexington, Ky.), **Olivia Schwamberger** (MH, Cincinnati, Ohio), **Madison Coulter** (OH, Maryville, Tennessee) and **Gabby Peitsch** (MH, Ellcott City, Maryland).
- Williams is a first-team Under Armour All-American.

OUR RECORD WHEN ...

	Overall	SEC
LOCATION		
Home	0-0	0-0
Away	0-0	0-0
Neutral	0-0	--
RANKING		
vs. Ranked Opponent	0-0	0-0
MATCH LENGTH		
3-Set Matches	0-0	0-0
4-Set Matches	0-0	0-0
5-Set Matches	0-0	0-0
STATISTICAL LEADERS		
UT hits .250 or better	0-0	0-0
UT hits below .250	0-0	0-0
Opp. hits .250 or better	0-0	0-0
Opp. hits below .250	0-0	0-0
UT has higher attack %	0-0	0-0
UT has lower attack %	0-0	0-0
Teams have same attack %	--	--
UT has more kills	0-0	0-0
UT has fewer kills	0-0	0-0
Same number of kills	0-0	0-0
3 players with 10+ kills	0-0	0-0
3 players hit .300+ (min. 10 attempts)	0-0	0-0
UT hits 30+ kills	0-0	0-0
UT allows 30+ kills	0-0	0-0
UT hits 50+ kills	0-0	0-0
UT allows 50+ kills	0-0	0-0
UT has more aces	0-0	0-0
UT has fewer aces	0-0	0-0
Same number of aces	0-0	0-0
UT has more digs	0-0	0-0
UT has fewer digs	0-0	0-0
Same number of digs	0-0	0-0
UT has more blocks	0-0	0-0
UT has fewer blocks	0-0	0-0
Same number of blocks	0-0	--
SET W/L		
UT wins Set 1	0-0	0-0
loses Set 1	0-0	0-0
UT wins Set 2	0-0	0-0
loses Set 2	0-0	0-0
UT wins Set 3	0-0	0-0
loses Set 3	0-0	0-0
UT wins Set 4	0-0	0-0
loses Set 4	0-0	0-0
UT wins Set 5	--	--
loses Set 5	0-0	0-0
MONTH		
August	0-0	--
September	0-0	0-0
October	0-0	0-0
November	0-0	0-0
DAY		
Sunday	0-0	0-0
Monday	--	--
Tuesday	--	--
Wednesday	0-0	0-0
Thursday	--	--
Friday	0-0	0-0
Saturday	0-0	--
COLOR		
Wearing Orange	0-0	0-0
Wearing White	0-0	0-0
Wearing Smokey Grey	0-0	0-0

OPPONENT & OPENER NOTES



IN OPENERS

IN SEASON OPENERS

- In the Rob Patrick era, the Vols are 16-4 in season openers, winning the last four.
- Tennessee opened the 2016 season with a 3-1 win at home over Cincinnati.
- The Vols have won their last four season openers and have won 13 of the last 15 under Coach Patrick.

BEST SEASON STARTS

- Tennessee's 14-0 record to start the 2015 season was the program's best in the NCAA era, surpassing the 11-0 start in 1986.
- The only better start was in 1973 when the team went 20-0 during the AIAW era.
- The Vols have started the year 5-0 or better 8 times in program history (five times in the Rob Patrick era):
 - 20-0 in 1973
 - 14-0 in 2015
 - 11-0 in 1986
 - 9-0 in 2004
 - 8-0 in 1979
 - 6-0 in 2010
 - 5-0 in 2006, 2000
- Tennessee has had 10+ regular season non-conference wins seven times in the Patrick era: 2016 (10), 2015 (14), 2004 (11), 2003 (10), 2002 (12), 2000 (11) and 1998 (11).

WEEKEND OPPONENTS

AGAINST WMU

- **Series:** Tennessee leads, 4-2
- **Current Streak:** Vols won 3
- **Last Match:** Vols won, 3-1, in 2016 in Kalamazoo, Mich. at Western Michigan

AGAINST WOFFORD

- **Series:** Tennessee leads, 1-0
- **Current Streak:** Vols won 1
- **Last Match:** Vols won, 3-1, in 2015 at the College of Charleston Invitational.

AGAINST GEORGE WASHINGTON

- **Series:** Tennessee leads, 6-2
- **Current Streak:** Vols won 2
- **Last Match:** Tennessee won, 3-0, in 2016 at the GW Invitational.

WESTERN MICHIGAN ROSTER

No.	Name	Pos.	Ht.	Year	Hometown/High School/Last College
1	Olivia Kofie	MB	6-1	Sr.	Elgin, Ill. (Larkin)
2	Willow Martin	OH	5-11	So.	Mason, Mich. (Mason)
3	Kathleen Reilly	DS	5-5	So.	Kansas City, Kan. (St. James Academy)
4	Quiana Ware	RS/MB	6-0	So.	Glendale Heights, Ill. (Glenbard West)
5	Emma Yarber	S	5-10	Fr.	Lexington, Ky. (Henry Clay)
6	Kaley Smith	L	5-5	Fr.	Mendon, Mich. (Mendon)
8	Kate Carey	RS	6-2	So.	Bloomfield Township, Mich. (Seaholm)
9	Rachel Bontrager	OH	5-11	Fr.	Valparaiso, Ind. (Valparaiso HS)
10	Sydney LeMay	MB	6-3	Jr.	Middleville, Mich. (Thornapple Kellogg)
11	Sydney Cheatham	S/DS	5-8	Jr.	Naperville, Ill. (Naperville North)
12	Mary Murphy	S	5-8	So.	Wilmington, Ill. (Joliet Catholic Academy)
13	Janell Williams	MB	6-2	Fr.	Ann Arbor, Mich. (Portage Central)
14	Cassandra Smigiel	MB	6-0	Fr.	Rockford, Mich. (Rockford)
17	Jordan White	MB	6-0	Fr.	Fayetteville, Ga. (Connections Academy)
20	Kennedy Potts	DS	5-3	So.	Muskegon, Mich. (Grand Rapids CC)

Colleen Munson - Head Coach | Ryan Manning - Associate Head Coach | Kyle Stahl - Assistant Coach

WOFFORD ROSTER

No.	Name	Pos.	Ht.	Year	Hometown/High School/Last College
1	Bella Santoro	OH	6-0	Sr.	Greer, S.C. / Riverside HS
2	Sutton Alexander	RS	6-2	Sr.	Rock Hill, S.C. / Rock Hill HS
3	Grace Campbell	MB	6-1	Fr.	Nashville, Tenn. / Christ Presbyterian Academy
5	Kristen Seibert	S	5-7	Fr.	Matthews, N.C. / Covenant Day School
6	Bijonae Jones	OH	5-10	Jr.	Blythewood, S.C. / Blythewood HS
7	Madeline Savage	L/DS	5-11	So.	Johns Creek, Ga. / Johns Creek HS
8	Emily Durham	OH	5-9	Fr.	Raleigh, N.C. / Middle Creek HS
9	Danni Densford	MH	6-1	Sr.	Sellersburg, Ind. / Silver Creek HS
10	Taylor Gill	DS	5-10	Jr.	Madison, Ala. / Madison Academy / Ole Miss
11	Lorissa King	S	5-9	So.	Windermere, Fla. / Olympia HS
12	Colleen Reilly	MB	6-0	Jr.	Chicago, Ill. / Marist HS
13	Kara Shacklette	MB	5-11	So.	Louisville, Ky. / Assumption HS
14	Lauren Miller	RS	6-2	R-Jr.	Prior Lake, Minn. / Prior Lake HS
15	Shey Washburn	DS	5-11	So.	Pfafftown, N.C. / Reagan HS
17	Alex Holland	OH	6-2	Sr.	Matthews, N.C. / Weddington HS
21	Riley Coonan	MB	6-1	Fr.	Jacksonville, Fla. / The Bolles School
22	Kelly Bossert	RS	6-2	So.	Easley, S.C. / Easley HS
23	Catie Cronister	OH	5-10	So.	Chicago, Ill. / Latin School of Chicago

Lynze Ross - Head Coach | Jordan Lay - Associate Head Coach | Amber Schinzing - Assistant Coach

GEORGE WASHINGTON ROSTER

No.	Name	Year.	Pos.	HT	Hometown/High School/Last College
2	Alexis Lete	Jr.	MB	6-2	New Albany, Ind./New Albany
3	Emily Newell	Sr.	MB	5-9	Chagrin Falls, Ohio/Kenston
4	Kelsey Clark	Jr.	OH	5-11	Chicago, Ill./Mother McAuley
5	Marianna Warren	Fr.	OH	6-1	Gaffney, S.C./Gaffney
6	Skylar Iott	So.	OH	6-0	Ida, Mich./St. Mary Catholic Central
8	Stacey Benton	GS	S	5-7	Ponte Vedra Beach, Fla./Arcadia/Dartmouth
10	Gillian Kane	Jr.	L	5-6	Murrysville, Pa./Franklin Regional
11	Aaliya Davidson	Sr.	OH	5-11	Belleveille, Mich./Cass Technical
12	Sydney Welch	Fr.	L	5-4	Louisville, Ky./Assumption
13	Callie Fauntleroy	Fr.	MB	6-2	Wilmette, Ill./New Trier
14	Jaimeson Lee	So.	S	5-10	Austin, Texas/Brentwood Christian School
15	Kristel Moor	Sr.	OPP	6-2	Viljandi, Estonia/Audentese Spordigümnaasium/Auburn
16	Jordan Young	So.	OH	6-0	Stewartsville, N.J./Bethlehem Catholic

Sarah Bernson - Head Coach | Nikki Holmes - Associate Head Coach | Nicole Buchholz - Assistant Coach

COACHING NOTES

YEAR NO. 21

- **Rob Patrick**, now in his 21st season as head coach, has made nine NCAA appearances with the Vols, including a program-best stretch of five straight from 2008-12.
- Since taking over the program in 1997, Patrick has become the program's all-time wins leader, and he comes in the 2017 season three wins shy of 400 for his career.
- While at the helm of the Orange & White, Patrick has averaged over 20 wins a season, and has had players earn 40 All-SEC honors and 24 All-South Region accolades.
- The native of Cleveland, Ohio, has twice earned National Coach of the Year honors and guided the Vols to the 2005 NCAA Final Four. He also led the team to SEC titles in 2004 and 2011.
- Of Tennessee's 17 All-Americans, Patrick has coached 15, including former libero Ellen Mullins, who graduated in 2013. Mullins was a two-time All-American, marking the 23rd occasion a player under Patrick has been named All-American.

- UNCW was coming off a conference title in 2015 in the Colonial Athletic Association. The team ended the year with a 24-8 record and four players earned All-CAA honors.
- In addition to recruiting, he also brings a great amount of experience to the defensive side, particularly when it comes to blocking and schemes.

CARDOZA RETURNS

- Director of Operations **Kevin Cardoza** returns for his second season.
- Cardoza came to Tennessee after working with the Maryland volleyball program as a volunteer assistant coach last year.
- Wells had also spent three seasons and the head coach for the men's and women's volleyball teams at Lindenwood University - Belleville.

DAILEY & COOK ADDED TO STAFF

- **Nikki Dailey** has joined Patrick's staff this season after spending three years as an assistant at East Tennessee State.
- She was a setter at Iowa, ranking fifth in program history with 3,161 career assists.
- **Kevin Cook** will also join the staff this year as a volunteer assistant coach.

THIRD FULL YEAR AT JCVC

- Tennessee volleyball's dedicated practice facility, the **Joan Cronan Volleyball Center**, was dedicated on Oct. 24, 2014.
- The \$3 million dollar facility features three courts, a locker room and lounge, equipment room, film study room, and coaches' offices. It was constructed adjacent to Regal Soccer Stadium off Neyland Drive.
- With the opening of the Joan Cronan Volleyball center, each varsity sport at UT now has its own dedicated practice space.
- The facility's namesake, **Joan Cronan**, was the women's athletic director for twenty-eight years at UT and served a three-month term as vice chancellor and director of athletics when the men's and women's departments merged in 2011.

ON THE PRO CIRCUIT

- 2011 All-American **Leslie Cikra** is a member of Gimcheon Korea Expressway Hi-Pass Volleyball Club for a third season.

SWING BLOCKERS

- Late in the spring 2016 semester, the coaches had changed Tennessee's defensive blocking scheme from static blocking to swing blocking.



HEAD COACH ROB PATRICK

CAREER RECORD

1997-PRESENT

Year	Total	SEC	Finish/Postseason
1997	15-19	5-9	4th SEC East
1998	19-10	7-7	4th SEC East
1999	19-13	8-6	2nd SEC East
2000	23-10	9-5	3rd SEC East, NCAA 1st Rd.
2001	16-11	7-7	3rd SEC East
2002	20-11	8-8	4th SEC East
2003	22-9	10-6	2nd SEC East
2004	32-3	15-1	T-1st SEC East, NCAA Reg. QF
2005	25-9	13-3	2nd SEC East, NCAA SF
2006	19-12	10-10	3rd SEC East, NCAA 1st Rd.
2007	11-18	6-14	5th SEC East
2008	22-10	15-5	3rd SEC East, NCAA 1st Rd.
2009	24-8	16-4	T-2nd SEC East, NCAA 2nd Rd
2010	25-7	15-5	2nd SEC East, NCAA 2nd Rd.
2011	28-4	19-1	1st SEC, NCAA 2nd Rd.
2012	22-8	15-5	3rd SEC, NCAA 1st Rd.
2013	9-23	1-17	13th SEC
2014	8-23	1-17	13th SEC
2015	21-12	7-11	T-8th SEC
2016	17-14	7-11	T-7th SEC

Total 397-235 194-152
2 SEC Titles, 9 NCAA Apps.

MILESTONE WINS

Win #	Opponent (Date)	Score
1	ETSU (8/30/1997)	3-1
50	Georgia State (10/26/1999)	3-0
100	East Carolina (9/14/2002)	3-0
200	Arkansas (9/17/2006)	3-1
250	Arkansas (9/25/2009)	3-0
300	Georgia (9/16/2011)	3-0
350	Coastal Carolina (9/21/2013)	3-1

PLAYERS TURNED COACHES

- **Erica Lear**, who last season completed her third year as an assistant coach at Tennessee, played for Patrick at Tennessee 1998-2001 before joining the staff in 2013.
- Lear is one of Patrick's many players now in the college, high school or club coaching ranks. As a player, she was a three-time All-SEC recipient. She coached at Emory and Memphis before joining the UT staff. She now serves as Development and Training Coordinator for the Memphis Metro club team.
- One of the most recent player-turned-coach is 2010 All-American **Kayla Jeter**, who completed her second year as an assistant coach at Cincinnati last season.
- Other UT letterwinners in college coaching:
 - **Amy Morris** (2003-05): Lassen Community College
 - **Michelle Piantodosi** (2001-04): Head Coach, Eckard
 - **Jasmine Fullove** (2002-05): Assistant, IPFW
 - **Caley Carter** (2001): Head Coach, Centenary
 - **Jaye Loyd** (2006-08): Assistant, UNC Charlotte
 - **Tiffany Baker** (2011-12): Assistant, Texas State
- **Lauren Clayton** (1996-99) and **Mindy Britten** (1996-97) now coach on the high school level, in Mississippi and Nashville, Tenn., respectively.
- **Janelle Hester** (1999-02) and **Lauren LeFlamme** (2004-08) have been coaching on the college and club levels.

BONETTI RETURNS AS ASSISTANT

- **AJ Bonetti** joined the Tennessee staff in March 2016 as an assistant coach and recruiting coordinator.
- Prior to that, he had spent the last seven seasons at UNC Wilmington, as an assistant coach for five years before serving as the associate head coach the last two years

COACHES & STAFF



ROB PATRICK
Head Coach
21st Year at Tennessee



AJ BONETTI
Assistant Coach
2nd Year at Tennessee



NIKKI DAILEY
Assistant Coach
1st Year at Tennessee



KEVIN CARDOZA
Director of Operations
2nd Year at Tennessee



KEVIN COOK
Volunteer Asst. Coach
1st Year at Tennessee

2016 MATCH-BY-MATCH LEADERS

OPPONENT	KILLS	ASSISTS	ACES	DIGS	TOTAL BLOCKS
Cincinnati	Grubbs (14)	Hansen (39)	Villano (4)	Villano (11)	Treiber (7)
ULM	Holmes (11) Andreno (11)	Cooler (21)	Bawcombe (5)	Schumacher (12)	Andreno (4)
Middle Tennessee	Holmes (9) Grubbs (9)	Hansen (28)	Bawcombe (3)	Hansen (14)	Andreno (6)
Eastern Michigan	Holmes (17)	Hansen (53)	Treiber (2) Hansen (2) Villano (2)	Villano (18)	Hembry (6)
Cleveland State	Grubbs (23)	Hansen (45)	Treiber (3) Turner (3)	Villano (27)	Andreno (4) Hembry (4)
Kent State	Holmes (14) Grubbs (14)	Hansen (47)	Treiber (1) Vallez (1)	Villano (16)	Treiber (8) Andreno (8)
Western Michigan	Holmes (21)	Hansen (56)	Schumacher (2)	Villano (13) Schumacher (13)	Treiber (3) Andreno (3)
Milwaukee	Grubbs (16)	Cooler (40)	Bawcombe (4)	Schumacher (14)	Buss (6)
Xavier	Grubbs (15)	Hansen (32)	Hansen (1) Holmes (1)	Villano (17)	Hembry (3)
Northern Illinois	Grubbs (12)	Hansen (31)	Holmes (1) Jimenez (1)	Vallez (10)	Treiber (3)
James Madison	Grubbs (13)	Hansen (40)	Vallez (2)	Villano (13)	Treiber (2) Hembry (2)
G. Washington	Treiber (14)	Hansen (41)	Villano (2)	Villano (11)	Hembry (3)
Mississippi State	Holmes (14)	Hansen (33)	Jimenez (1) Coco (1) Bawcombe (1)	Schumacher (11)	Treiber (7)
Georgia	Grubbs (12)	Hansen (35)	Grubbs (3)	Schumacher (9)	Treiber (6)
South Carolina	Grubbs (17) Treiber (17)	Hansen (52)	Villano (2)	Hansen (16)	Hembry (5)
#5 Florida	Grubbs (17)	Hansen (46)	Schumacher (1) Grubbs (1)	Schumacher (16)	Treiber (4) Hembry (4)
Troy	Turner (13)	Hansen (27)	Villano (2)	Schumacher (13)	Reed (4) Turner (4)
#25 Kentucky	Grubbs (10)	Hansen (32)	N/A	Schumacher (10)	Hembry (1) Holmes (1)
Ole Miss	Hembry (12)	Hansen (32)	Grubbs (2)	Hansen (12)	Hembry (7)
Arkansas	Grubbs (18)	Hansen (49)	Schumacher (1)	Schumacher (18)	Treiber (2) Jimenez (2)
Mississippi State	Treiber (7) Holmes (7)	Hansen (29)	Schumacher (1) Coco (1)	Schumacher (10)	Treiber (4)
Alabama	Hembry (12)	Hansen (33)	Hansen (1) Holmes (1) Jimenez (1)	Hansen (14) Schumacher (14)	Andreno (4) Hansen (4)
Auburn	Holmes (13)	Hansen (42)	Jimenez (3)	Schumacher (16)	Treiber (4)
Missouri	Grubbs (12)	Hansen (45)	Grubbs (2)	Schumacher (13) Hansen (13)	N/A
Texas A&M	Grubbs (14)	Hansen (31)	Treiber (1) Turner (1)	Schumacher (10) Hansen (10)	Andreno (4) Tirnier (4)
Ole Miss	Grubbs (13)	Hansen (40)	Jimenez (1) Schumacher (1) Coco (1)	Schumacher (20)	Treiber (4)
Auburn	Holmes (13)	Hansen (42)	Jimenez (3)		
Arkansas	Grubbs (10)	Hansen (31)	Treiber (2)	Schumacher (11)	Treiber (5)
Texas A&M	Treiber (10)	Hansen (43)	Treiber (2)	Hansen (20)	Treiber (7)
LSU	Grubbs (19)	Hansen (51)	Hansen (2)	Schumacher (21)	Treiber (5)
#25 Kentucky	Turner (12)	Hansen (42)	Treiber (3)	Jimenez (16) Schumacher (16)	Hembry (6)
Missouri	Treiber (9)	Hansen (27)	Schumacher (1) Treiber (1) Jimenez (1)	Hansen (11)	Treiber (2) Grubbs (2)

2016 MATCH STAT LEADERS

Times a player has led the team in a statistical category in a match (note: ties count as leaders):

KILLS Grubbs - 18 Holmes - 8 Treiber - 5 Turner - 3 Hembry - 2 Andreno - 1	Vallez - 2 Turner - 1
ASSISTS Hansen - 29 Cooler - 2	DIGS Schumacher - 18 Villano - 8 Hansen - 8 Vallez - 1 Jimenez - 1
ACES Treiber - 7 Villano - 5 Schumacher - 6 Bawcombe - 4 Jimenez - 6 Grubbs - 4 Hansen - 4 Holmes - 3 Coco - 3	TOTAL BLOCKS Treiber - 17 Hembry - 10 Andreno - 6 Buss - 1 Turner - 1 Reed - 1 Holmes - 1 Jimenez - 1 Grubbs - 1 Hansen - 1

INDIVIDUAL MATCH HIGHS

KILLS 23, Tessa Grubbs vs. Cleveland State (9/2)
ATTACKS 59, Bri Holmes vs. Eastern Michigan (9/2)
HITTING % (MIN. 10 K) .733, Bri Holmes vs. ULM (8/27)
ASSISTS 56, Sedona Hansen vs. Western Mich. (9/9)
ACES 5, Kelsey Bawcombe vs. ULM (8/27)
DIGS 27, Bridgette Villano vs. Cleveland St. (9/2)
BLOCK SOLOS 2, five times
BLOCK ASSISTS 8, Erica Treiber vs. Kent State (9/3) 8, Alyssa Andreno vs. Kent State (9/3)
TOTAL BLOCKS 8, Erica Treiber vs. Kent State (9/3) 8, Alyssa Andreno vs. Kent State (9/3) 8, Alyssa Andreno vs. Alabama (10/28)

TEAM MATCH HIGHS

KILLS 72 vs. Cleveland State (9/2)
ATTACKS 195 vs. Cleveland State (9/2)
HITTING % .447 vs. ULM (8/27)
ASSISTS 66 vs. Cleveland State (9/2)
ACES 10 vs. Cleveland State (9/2)
DIGS 78 vs. Cleveland State (9/2)
BLOCK SOLOS 3 vs. Cincinnati (8/26)
BLOCK ASSISTS 26 vs. Kent State (9/3)

2016 MATCH-BY-MATCH STARTERS

OPPONENT	RS/DS	MH/MB	MH/MB	S	OH	OH/DS	LIBERO
Cincinnati	Buss	Treiber	Hembry	Hansen	Holmes	Grubbs	Villano
ULM	Buss	Reed	Hembry	Cooler	Holmes	Turner	Schumacher
Middle Tennessee	Andreno	Treiber	Hembry	Hansen	Holmes	Grubbs	Villano
Eastern Michigan	Andreno	Treiber	Hembry	Hansen	Holmes	Turner	Villano
Cleveland State	Andreno	Treiber	Hembry	Hansen	Bawcombe	Grubbs	Villano
Kent State	Andreno	Treiber	Hembry	Hansen	Holmes	Vallez	Villano
Western Michigan	Andreno	Treiber	Hembry	Hansen	Holmes	Vallez	Villano
Milwaukee	Jimenez	Treiber	Buss	Cooler	Bawcombe	Vallez	Schumacher
Xavier	Andreno	Treiber	Hembry	Hansen	Holmes	Vallez	Villano
Northern Illinois	Andreno	Treiber	Hembry	Hansen	Holmes	Vallez	Villano
James Madison	Andreno	Treiber	Hembry	Hansen	Holmes	Vallez	Villano
George Washington	Andreno	Treiber	Hembry	Hansen	Holmes	Vallez	Villano
Mississippi State	Andreno	Treiber	Hembry	Hansen	Holmes	Vallez	Villano
Georgia	Andreno	Treiber	Hembry	Hansen	Holmes	Vallez	Schumacher
South Carolina	Coco	Treiber	Hembry	Hansen	Holmes	Vallez	Schumacher
#5 Florida	Andreno	Treiber	Hembry	Hansen	Holmes	Vallez	Schumacher
Troy	Jimenez	Reed	Hembry	Hansen	Holmes	Turner	Schumacher
#25 Kentucky	Jimenez	Treiber	Hembry	Hansen	Holmes	Grubbs	Schumacher
Ole Miss	Jimenez	Treiber	Hembry	Hansen	Holmes	Grubbs	Schumacher
Arkansas	Andreno	Treiber	Hembry	Hansen	Holmes	Vallez	Schumacher
Mississippi State	Jimenez	Treiber	Hembry	Hansen	Holmes	Vallez	Schumacher
Alabama	Andreno	Treiber	Hembry	Hansen	Holmes	Turner	Schumacher
Auburn	Jimenez	Treiber	Hembry	Hansen	Holmes	Vallez	Schumacher
Missouri	Jimenez	Treiber	Hembry	Hansen	Holmes	Turner	Schumacher
Texas A&M	Andreno	Treiber	Hembry	Hansen	Grubbs	Turner	Schumacher
Ole Miss	Jimenez	Treiber	Andreno	Hansen	Grubbs	Turner	Schumacher
Arkansas	Jimenez	Treiber	Hembry	Hansen	Grubbs	Phillips	Schumacher
Texas A&M	Andreno	Treiber	Hembry	Hansen	Holmes	Coco	Schumacher
LSU	Andreno	Treiber	Hembry	Hansen	Holmes	Coco	Schumacher
#25 Kentucky	Jimenez	Reed	Hembry	Hansen	Holmes	Coco	Schumacher
Missouri	Phillips	Treiber	Hembry	Hansen	Holmes	Coco	Schumacher

2016 AWARDS & DOUBLE-DOUBLES

DOUBLE-DOUBLE TRACKER

KELSEY BAWCOMBE

Season: 0 // Career: 3

SEDONA HANSEN

Season: 10 // Career: 10

Middle Tennessee (8/27)	28 assists, 14 digs
Eastern Michigan (9/2)	53 assists, 17 digs
Cleveland State (9/2)	45 assists, 13 digs
Kent State (9/3)	47 assists, 11 digs
James Madison (9/17)	40 assists, 10 digs
Mississippi State (9/23)	33 assists, 10 digs
South Carolina (9/28)	52 assists, 16 digs
Ole Miss (10/14)	32 assists, 12 digs
Arkansas (10/16)	49 assists, 13 digs
Alabama (10/28)	33 assists, 14 digs
Missouri (11/4)	45 assists, 13 digs

KANISHA JIMENEZ

Season: 0 // Career: 12

AWARDS TRACKER

TESSA GRUBBS

DISH Tennessee Classic - All-Tournament Team
GW Invitational - All-Tournament Team

SEDONA HANSEN

SEC Freshman of the Week (10/31)

RAINA HEMBRY

CSU Invitational - All-Tournament Team

BRI HOLMES

Holiday Inn West Invitational - All-Tournament Team

ERICA TREIBER

DISH Tennessee Classic - MVP
Holiday Inn West Invitational - All-Tournament Team
GW Invitational - All-Tournament Team

BRIDGETTE VILLANO

DISH Tennessee Classic - All-Tournament Team
CSU Invitational - All-Tournament Team

CAREER COUNTERS

HITTING PERCENTAGE

RK	Name	No.	Years
1.	Beverly Robinson	.359	1982-83
2.	Erica Treiber	.351	2015-16
3.	Kristen Andre	.336	2002-05
4.	Tamala Brightman	.335	1990-93
5.	Sarah Blum	.315	2003-06
6.	Ariana Wilson	.312	1998-01
7.	Trinia Cuseo	.308	2000-01
8.	DeeDee Harrison	.303	2008-12
9.	Tanya Haave	.300	1980-84
10.	Erika Brez	.295	1998-99

CAREER MILESTONES COMING UP...

700 Kills

Kanisha Jimenez - 582 (currently)

Erica Treiber - 508 (currently)

1500 Assists

Sedona Hansen - 1130 (currently)

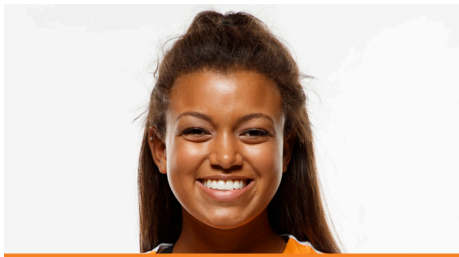
300 Blocks

Erica Treiber - 283 (currently)

900 Digs

Brooke Schumacher - 606 (currently)

PLAYER NOTES



#0 KEYTON KINLEY

DS/L, 5-6, Fr., Lexington, Ky.

CAREER HIGHS

Kills: -
Attacks: -
Hitting Pct.: -
Assists: -
Aces: -
Solo Blocks: -
Block Assists: -
Total Blocks: -
Digs: -

HIGH SCHOOL/CLUB

Two-time team MVP
 Two-time member of Prep Volleyball's Defensive Dandies
 Prep Volleyball Senior Ace
 Prep Volleyball All-American
 Played for club team Lexington United

ACADEMICS

• Majoring in communications.



#1 STEPHANIE BUSS

MB, 6-1, Sr., Sioux Falls, S.D.

CAREER HIGHS

Kills: 15*
Attacks: 23*
Hitting Pct.: .609*
Assists: 2*
Aces: 2*
Solo Blocks: 2*
Block Assists: 7*
Total Blocks: 8*
Digs: 4*
 *-at Cal State Fullerton

2016

• Had a .286 hitting percentage with 3 kills against ULM at the DISH Tennessee Classic
 • Had a .500 hitting percentage with 9 kills against Milwaukee at the Holiday Inn West Invitational

2015

• Finished her first year as a Vol by playing in 23 matches, starting 10. She averaged 1.56 kills/set (89 total) and 0.58 blocks/set (33 total).
 • Recorded nine kills in a win against Coppin State on Aug. 29, hitting .471
 • Added nine kills and hit a season-high .533 against Jacksonville on Sept. 12

2014 AT CAL STATE FULLERTON

• Played in all 29 matches as a freshman, appearing in 106 sets and totaling 150 kills, 28 digs, and a team-high 90 total blocks
 • Added five service aces and seven assists
 • Hammered down a career best 15 kills against Wake Forest on Sept. 13 on a career-high 23 attempts while hitting .609, another personal best
 • Set a career-high eight blocks against Cal Poly

HIGH SCHOOL/CLUB

• Played High School Volleyball at Lincoln High School in Sioux Falls, S.D. where she was a four-year letter winner and team captain for two years
 • Helped lead her team to back-to-back wins at the South Dakota State AA Championships
 • Earned All-State First Team and All-Conference Team honors in 2013 and 2014 and made the All-Tournament Team in 2011
 • Also participated in Track and Field as a freshman and sophomore
 • Played club with Kairos Elite Volleyball

ACADEMICS

• Majoring in accounting



#2 ALYSSA ANDRENO

MH, 6-2, So., Stafford, Va.

CAREER HIGHS

Kills: 16 (vs. Eastern Michigan, 9/2/16)
Attacks: 38 (vs. Eastern Michigan, 9/2/16)
Hitting Pct.: .667 (vs. ULM, 8/27/16)
Assists: 2 (vs. Cleveland State, 9/2/16)
Aces: --
Solo Blocks: 2 (vs. Alabama, 10/28/16)
Block Assists: 8 (vs. Kent State, 9/2/16)
Total Blocks: 8, 2x (last vs. Alabama, 10/28/16)
Digs: 6 (vs. Kent State, 9/2/16)

2016

• Started her career at the DISH Tennessee Classic. She led the team with 11 kills against ULM and had 6 blocks against Middle Tennessee.
 • Had 16 kills against Eastern Michigan with a .467 hitting percentage
 • Had 11 kills vs. Western Michigan during the Holiday Inn West Invitational

HIGH SCHOOL/CLUB

• Attended Brooke Point High School and competed as a part of Metro Volleyball Club, coached by Silvia Johnson
 • Holds the single-season kill and ace records at Brooke Point. As a junior, she had 253 kills, 151 digs and 106 blocks.
 • As a senior, she served as team captain as a senior and broke her junior records; she was also named second-team all-state, the Conference 15 Player of the Year and All-Regional 5A North
 • As a 16-year-old playing for the Fredericksburg Juniors Volleyball Club, she was named an AAU All-American as her team placed fifth at AAU nationals

ACADEMICS

• Plans to major in kinesiology and train to become a physical therapist, athletic trainer or personal trainer

PLAYER NOTES



#3 MADISON COULTER

OH, 5-11, Fr., Maryville, Tenn.

CAREER HIGHS

Kills: --
Attacks: --
Hitting Pct.: --
Assists: --
Aces: --
Solo Blocks: --
Block Assists: --
Total Blocks: --
Digs: 5 (vs. ULM, 8/27/16)

HIGH SCHOOL/CLUB

- Blount County MVP and Hitter of the Year as a senior
- Played basketball for three years
- Served as team captain and reached 1,000 career points as a junior
- Also spent a year on the track & field team
- Participated in the Maryville Chamber Orchestra
- Played for club team K2

ACADEMICS

- Majoring in political science



#4 ASHA PHILLIPS

DS, 5-5, So., Murfreesboro, Tenn.

CAREER HIGHS

Kills: --
Attacks: --
Hitting Pct.: --
Assists: --
Aces: --
Solo Blocks: --
Block Assists: --
Total Blocks: --
Digs: 5 (vs. ULM, 8/27/16)

2016

- Had 5 digs and 1.67 digs per set during the DISH Tennessee Classic

HIGH SCHOOL/CLUB

- Attended Siegel High School and played for the Alliance Volleyball Club, where she was coached by Tennessee grad John Blair and former UT All-American Ellen Mullins
- Named a 2015 AVCA Honorable Mention All-American for Siegel
- In final two seasons at Siegel, she recorded 1,014 digs and 81 aces; she also averaged 3.1 kills per set as a senior while playing outside hitter
- Earned all-region honors in 2015 and all-district honors in 2014 and 2015

ACADEMICS

- Majoring in kinesiology



#6 BROOKE SCHUMACHER

DS/L, 5-4, Jr., Hartford, Wis.

CAREER HIGHS

Kills: 2 (Florida, 10/2/16)
Attacks: 2 (Florida, 10/2/16)
Hitting Pct.: --
Assists: 6 (Florida, 10/2/16)
Aces: 4 (Hampton, 9/18/15)
Solo Blocks: --
Block Assists: --
Total Blocks: --
Digs: 18 (Arkansas, 10/16/16)

2016

- Throughout 3 matches at the DISH Tennessee Classic, she had 20 digs with 2.00 digs per set
- She had 27 digs throughout 3 matches at the Cleveland State Tournament in Ohio
- Had 3 assists and 14 digs against Milwaukee during the Holiday Inn West Invitational
- Emerged as the primary libero to start SEC play
- Recorded career-best 16 digs and 6 assists against Florida

2015

- Played in 32 matches, starting four at DS. Late in the season, she took over the libero duties following a season-ending knee injury to Bridgette Villano. She averaged 2.32 digs/set, finishing with 253 total for the season.
- Hammered four aces en route to a victory against Hampton on Sept. 18

HIGH SCHOOL/CLUB

- Played High School Volleyball at Hartford Union High School in Hartford, Wisc., where she was a three-year letterwinner and served two years as captain
 - Broke school and personal record with 647 during senior season and broke school career digs of 1306 with 1831
 - Was one of two liberos to make All-State Team and was the defensive high school player of the year
 - Won the Oriole Defense Pride Award, All-State Honorable Mention and All-Conference First Team as a junior
 - Was named All-Conference Honorable Mention in 2012
- Played club volleyball with G-Force and Milwaukee Sting

ACADEMICS

- Majoring in therapeutic recreation

PLAYER NOTES



#7 ERICA TREIBER

MH, 6-1, Jr., Unionville, Mich.

CAREER HIGHS

Kills: 17 (South Carolina, 9/28/16)
Attacks: 40 (South Carolina, 9/28/16)
Hitting Pct.: .875 (Auburn, 11/26/15)
Assists: 1, 3x (last vs. South Carolina, 9/28/16)
Aces: 3, 2x (last vs. Cleveland State, 9/29/16)
Solo Blocks: 2, 3x (last vs. Alabama, 10/2/15)
Block Assists: 10 (Georgia, 9/27/15)
Total Blocks: 10 (Georgia, 9/27/15)
Digs: 8 (vs. Cleveland State, 9/2/16)

2016

- DISH Tennessee Classic MVP - Made only one attack error while hitting .474 over the weekend with 19 kills over three matches
- Landed her career high of 8 digs against Cleveland State at the CSU Invitational in Ohio. She also had a .500 hitting percentage with 10 kills in the tournament against Eastern Michigan.
- Earned a spot on the All-Tournament Team with .524 hitting percentage and 6 digs throughout the Holiday Inn West Invitational

2015

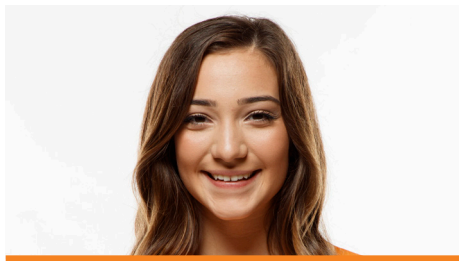
- **2015 SEC All-Freshman Team**
- Named to the all-tournament team at the DISH Tennessee Volleyball Classic.
- SEC Freshman of the Week (9/8)
- SEC Freshman of the Week (10/5)
- Started all 33 matches for Tennessee as a freshman. She finished with 247 kills (2.15 kills/set), a team-leading .354 hitting percentage, and a team-leading 131 blocks (1.14 blocks/set).

HIGH SCHOOL/CLUB

- Treiber was an honorable mention Under Armour All-American in 2014
- A four-year starter for Unionville-Sebewaing Area High School, she helped lead the Patriots to the semifinals of the state tournament as a senior
- Posted 1,706 kills during her prep career -- an average of 3.22 kills per set
- Two-time all-state selection and two-time Michigan Miss Volleyball finalist
- Averaged 5.1 kills, 3.8 digs, and 1.8 blocks per set during her senior season
- Played club volleyball with Valley Volleyball and Michigan Elite
- Also played prep and club softball, serving as a pitcher/first baseman. She batted better than .500 during her junior season with nine home runs and 50 RBIs and earned all-state honors

ACADEMICS

- Kinesiology major



#8 CALLIE WILLIAMS

S, 5-9, Fr., Waco, Texas

CAREER HIGHS

Kills: --
Attacks: --
Hitting Pct.: --
Assists: --
Aces: --
Solo Blocks: --
Block Assists: --
Total Blocks: --
Digs: --

HIGH SCHOOL/CLUB

- First Team Under Armour All-American
- Averaged 12.2 assists per set
- Helped Midway High to a 42-4 record
- Prior to Midway, led Bishop Lynch High to three straight
- Texas state titles (2013-15)
- Named to the 2015 All-Tournament Team
- Named All-District four times
- Played for the club team Dallas Skyline Juniors

ACADEMICS

- Majoring in biological sciences.



#10 BREANA JETER

OH, 6-1, RS So., Solon, Ohio

CAREER HIGHS

Kills: 2 (Mississippi State, 10/23/16)
Attacks: 6 (Mississippi State, 10/23/16)
Hitting Pct.: .167 (Mississippi State, 10/23/16)
Assists: --
Aces: --
Solo Blocks: --
Block Assists: 1 (Mississippi State, 10/23/16)
Total Blocks: --
Digs: 1 (vs. ULM, 8/27/16)

2016

- Made SEC debut against Mississippi State (10/23) and recorded two kills and her first block.

2015

- Redshirted during the year, returning from an injury suffered as a high school senior.

HIGH SCHOOL/CLUB

- Played High School Volleyball at Solon High School in Solon, Ohio where she was a four-year letterwinner and served two years as captain
- Did not play her senior season due to an injury
- Helped lead the team to a conference championship win in 2012 with a 20-5 record
- Led the team to a district championship title in 2011
- Earned Honorable Mention during her junior season
- Played club volleyball with Maverick Volleyball Club

ACADEMICS

- Majoring in audiology and speech pathology

PLAYER NOTES



#11 SEDONA HANSEN

S, 5-8, So., Wrightwood, Calif.

CAREER HIGHS

Kills: 5 (at South Carolina, 9/28/16)
Attacks: 10 (vs. Cincinnati, 8/26/16)
Hitting Pct.: .556 (at South Carolina, 9/28/16)
Assists: 56 (vs. Western Michigan, 9/9/16)
Aces: 2 (vs. Eastern Michigan, 9/2/16)
Solo Blocks: --
Block Assists: 3 (at Mississippi State, 10/23/16)
Total Blocks: 3 (at Mississippi State, 10/23/16)
Digs: 17 (vs. Eastern Michigan, 9/2/16)

2016

- Started in 29 matches at setter as a freshman, recording at least 30 assists in 19 matches and topping the 50-assist marker three times
- Only Vol to record a double-double during the season, doing so 13 times.
- During three matches at the DISH Tennessee Classic, she had 67 assists, 20 digs, and a .353 hitting percentage.
- Recorded a career-best 53 assists against Eastern Michigan during the Cleveland State Tournament.
- Had 23 digs and 112 assists (12.4 assists/set) throughout three matches during the GW Invitational
- Led the team in assists (52), hitting percentage (.556) and digs (16) in a five setter against South Carolina on 9/28/16.
- Had 46 of the team's 58 assists and 7 digs versus Florida on 10/2/16
- Led the team with 32 assists and 8 digs against Kentucky on 10/9/16
- Had 32 assists, 12 digs, and a .667 hitting percentage versus Ole Miss on 10/14/16
- Had 49 assists and 13 digs against Arkansas on 10/16/16
- Cleared 50 assists against LSU on Nov. 20, finishing with 51 assists and 15 digs

HIGH SCHOOL/CLUB

- Attended Serrano High School and competed with the Racho Valley Volleyball Club, coached by Danny Scott
- Served as team captain at Serrano for three years, and the team won its league all four years she played in high school
- Also played track and field two years and soccer for one year in high school
- Named PrepVolleyball.com's Setter of the Year in the 18s and the No. 55 player in PrepVolleyball's Senior Aces
- Part of the winning Club West team in the 14-and-under junior national championships

ACADEMICS

- Majoring in business



#12 GABRIELLE PEITSCH

MH, 6-2, Fr., Ellicott City, Md.

CAREER HIGHS

Kills: --
Attacks: --
Hitting Pct.: --
Assists: --
Aces: --
Solo Blocks: --
Block Assists: --
Total Blocks: --
Digs: --

HIGH SCHOOL/CLUB

- Was team captain as a senior
- First Team All-Howard County in 2015
- Team Impact Player of the Year in 2015
- First Team McDonough All-Tournament in 2016
- Played for the club team Metro Volleyball Club

ACADEMICS

- Majoring in accounting



#13 KANISHA JIMENEZ

OH/RS, 6-1, Sr., Bayamón, Puerto Rico

CAREER HIGHS

Kills: 22 (Towson, 8/28/15)
Attacks: 50 (Towson, 8/28/15)
Hitting Pct.: .450 (Montana State, 9/20/14)
Assists: 4 (vs. Tennessee Tech, 8/29/14)
Aces: 4 (at Evansville, 9/9/14)
Solo Blocks: 1, 8x (last vs. NC State, 9/19/15)
Block Assists: 7 (at Georgia, 9/27/15)
Total Blocks: 7, 2x (last at Georgia, 9/27/15)
Digs: 20 (vs. Cleveland State, 8/30/14)

2016

- Had 2 aces against Milwaukee during the Holiday Inn West Invitational

2015

- Played in 32 of 33 team matches, starting 31. She was the team leader in kills (324) and kills per set (2.87). She was second on the team in aces (19 total, 0.17 aces/set), second in digs per set (2.42), and third in blocks (80 total, 0.71 blocks/set).
- Posted a career-high 22 kills along with 19 digs in a win against Towson on Aug. 28
- Recorded double-doubles against Towson (Sept. 28), Tennessee Tech (Sept. 3), Wofford (Sept. 11) and Jacksonville (Sept. 12)
- Was named to the Towson Invitational All-Tournament Team

2014

- Appeared in 31 matches during her true freshman season, getting stars in 26 on her way to 191 total kills, 260 total digs, 68 total blocks, and 17 service aces for the year
- Finished the year ranked inside the team's top three in four statistical categories: kills (3rd), aces (2nd), blocks (3rd), and digs (3rd)
- Posted a double-double in just her second career match, finishing with 11 kills and a season-high 20 digs in a 3-1 win over Cleveland State on Aug. 30
- Closed out the year with 11 matches with 10 or more digs, including a run of four in a row from Sept. 6 to Sept. 12

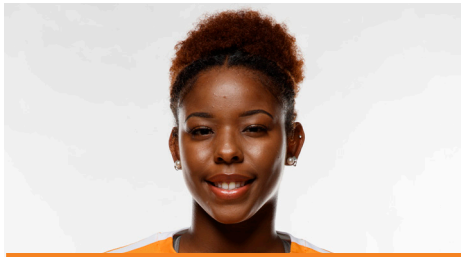
HIGH SCHOOL

- Helped guide her high school team to championships in the Copa El Nuevo Dia in 2010, 2012, and 2013; as well as the Copa Princera Hora in 2011
- An internationally experienced player, has competed for Puerto Rico on the country's junior and national teams
- Earned a bronze medal at the Norcerca Continental Championships in 2013 and represented Puerto Rico at the U-20 World Cup last summer
- Made her national team debut in 2013 at the Grand Prix of the International Volleyball Federation

ACADEMICS

- Majoring in sociology

PLAYER NOTES



#14 KENDRA TURNER

OH, 6-1, Sr., LaPlace, La.

CAREER HIGHS

Kills: 23 (Missouri, 11/7/14)
Attacks: 52 (Missouri, 11/7/14)
Hitting Pct.: .375, 2x (last vs. Kennesaw St, 9/12/14)
Assists: 2 (at Coastal Carolina, 9/13/14)
Aces: 3 (at Cleveland State, 9/2/16)
Solo Blocks: 2 (vs. Milwaukee, 9/9/16)
Block Assists: 6 (vs. Alabama, 10/28/16)
Total Blocks: 6, 2x (last vs. Alabama, 10/28/16)
Digs: 8 (vs. Eastern Michigan, 9/2/16)

2016

- Over the span of 3 matches during the DISH Tennessee Classic, she had a hitting percentage of .500
- Had 3 aces with a .375 hitting percentage against Cleveland State during the Cleveland State Tournament in Ohio
- Had 8 digs within 2 matches during the Holiday Inn West Invitational in Kalamazoo, Michigan

2015

- Missed the non-conference season while recovering from a foot injury and appeared in all 18 matches during SEC play, starting six contests. She averaged 2.43 kills/set (141 total)

2014

- Played in 26 matches during her freshman season, getting 22 starts along the way
- Led the team in both total kills (222) and kills per set (2.67) while also totaling 41 digs and 33 total blocks
- Recorded a career-high 23 kills against Missouri on Nov. 7, doing so on a .308 hitting efficiency and becoming the only Lady Vol in 2014 with a match of 20+ kills
- Ended the year with eight matches of 10 or more kills and having led UT in kills nine times
- Posted a season-best six blocks at Mississippi State on Oct. 17, complementing a 10-kill night
- Came away with 17 kills and a pair of blocks in a 3-2 win over Mercer on Sept. 20

HIGH SCHOOL

- Named District 4-IV MVP after senior season in which she averaged 19 kills per match
- Earned New Orleans Area All-District Volleyball Team and NOLA.com | The Times-Picayune All-New Orleans Area Volleyball Team honors
- Played for Southern Swing and Louisiana Volleyball club teams under the direction of her cousin and high school coach Chelsey Nicholas

ACADEMICS

- Intends to major in sociology



#17 TESSA GRUBBS

OH, 6-3, So., Tega Cay, S.C.

CAREER HIGHS

Kills: 23 (vs. Cleveland State, 9/2/16)
Attacks: 58 (vs. Cleveland State, 9/2/16)
Hitting Pct.: .579 (vs. Georgia, 9/25/16)
Assists: --
Aces: 3 (vs. Georgia, 9/25/16)
Solo Blocks: 2 (Milwaukee, 9/9/16)
Block Assists: 6 (vs. Cincinnati, 8/26/16)
Total Blocks: 6 (vs. Cincinnati, 8/26/16)
Digs: 7, 2x (last vs. Xavier, 9/10/16)

2016

- Named to the SEC All-Freshman Team after leading the Vols as an offensive threat, playing in 26 matches and averaging 3.60 kills/set (320 overall) and recording 0.82 digs/set and 0.52 blocks/set.
- Had at least 10 kills in 15 matches played and more than 15 kills on seven occasions in her first full year playing outside hitter after growing up in the middle positions.
- Earned a spot on the DISH Tennessee Classic All-Tournament Team to start the year with 23 kills (3.29 k/s) and 11 digs in two matches played.
- Recorded a career-best 23 kills against Cleveland State in a five-setter, also collecting six digs and two blocks.
- Earned All-Tournament Team honors during the GW Invitational, averaging 4.11 kills/set and a .361 hitting percentage throughout three matches
- Posted a career-best three aces against Georgia during their match at home on 9/25/16. During the same match she had 12 kills and an efficient .579 hitting percentage
- Led the team with 17 kills and earned a .343 hitting percentage against Florida on 10/2/16
- Led the team in kills and hitting percentage with 18 kills and a .400 hitting percentage against Arkansas on 10/16/16
- Second-most kills of the season came at home against LSU (11/20) where she posted 19 while hitting .378 with three block assists in a 3-1 team win.

HIGH SCHOOL/CLUB

- Attended Fort Mill High School and played for Carolina Union Volleyball club.
- Earned 2015 Under Armour Honorable Mention All-America honors as a senior, recording 88 aces in her final year at Fort Mill
- During her junior year, she averaged 5.8 kills, 1.7 digs and 3.6 kills per set.

ACADEMICS

- Majoring in kinesiology



#18 MACKENZIE COOLER

S, 6-1, Sr., Ridgeland, S.C.

CAREER HIGHS

Kills: 5*
Attacks: 10*
Hitting Pct.: .714*
Assists: 41*
Aces: 3*
Solo Blocks: 1*
Block Assists: 3 (last vs. ULM, 8/27/16)
Total Blocks: 4*
Digs: 12*
 *-at Charleston

2016

- Played in 10 matches in her first year at Tennessee, starting two of them
- Played backup setter during the season, occasionally seeing time on the front row; averaged 4.75 assists per set and 0.85 digs per set
- Best match of the season came in a start against Milwaukee where she recorded 40 assists and helped Tennessee hit .361 as a team; she also had five kills and nine digs in the four-set victory.
- Also recorded 21 assists in an early-season start against ULM

2015 AT CHARLESTON

- Played in 79 of 129 sets for Charleston as a sophomore, starting 10 matches
- Averaged 4.42 assists per set (349 total), the second-most on the team, and 1.93 assists per set (97 total)

2014 AT CHARLESTON

- Enjoyed a superb first season in the lowcountry earning All-CAA Rookie Team honors
- Played in 32 of 33 matches including 121 sets
- Averaged 4.83 assists per set (585 total), second only to 2013 CAA Setter of the Year Kallie McKown
- Facing 2013 CAA runners-up Northeastern in early October, Cooler picked up a double-double, dishing out 18 assists and picking up 10 digs followed by a 21-assist, 8-dig showing versus Hofstra

HIGH SCHOOL/CLUB

- Bluffton High School's first Division I volleyball player
- Earned All-Region 8AAAA Player of the Year, All-State team, 3A/4A All-Star team honors and served as Bluffton's team captain
- Holds the school record for kills (1,716) in a career, and led her team to a 8AAAA Region title

ACADEMICS

- Majoring in audiology and speech pathology

PLAYER NOTES



#19 STEPHANIE SPENCER

OH, 6-1, Jr., North Canton, Ohio

CAREER HIGHS

Kills: 22*
Attacks: 57*
Hitting Pct.: .571*
Assists: 2*
Aces: -1*
Solo Blocks: 1*
Block Assists: 5*
Total Blocks: 5*
Digs: 18*

*-at Georgia Southern

2015 & 16 AT GEORGIA SOUTHERN

- Averaged 2.22 kills per set as a freshman
- Was second on the team in kills that season
- Had a career-high 22 kills against Georgia as a freshman
- Had a career-high 18 digs at Louisiana as a sophomore
- Recorded two double-doubles as a sophomore

HIGH SCHOOL/CLUB

- Third Team All-State after advancing to the state title match in 2014
- Two-time First Team All-District, All-County and All-League
- Won a state championship in 2012
- Had 400 kills, 180 digs, 36 blocks and 32 aces as a senior
- Also lettered in softball
- Played on club team Ohio Extreme
- Two-time Power League Tournament MVP

ACADEMICS

- Majoring in kinesiology



#28 OLIVIA SCHWAMBERGER

MH, 6-3, Fr., Cincinnati, Ohio

CAREER HIGHS

Kills: --
Attacks: --
Hitting Pct.: --
Assists: --
Aces: --
Solo Blocks: --
Block Assists: --
Total Blocks: --
Digs: --

HIGH SCHOOL/CLUB

- First Team All-Conference for three straight years
- Second Team All-City in 2015 and 2016
- Was on the Under Armour Watch List and Prep Volleyball's Senior Aces
- Holds Anderson school records in career blocks (264), blocks in a season (107), kills in a season (289) and season attack percentage (.382)
- National Honors Society and Spanish National Honor Society
- Played for the club team NKYVC

ACADEMICS

- Majoring in mathematics

TEAM STUDIES

Here's a quick guide to the Vols' majors and areas of study at the University of Tennessee:

ALYSSA ANDRENO

Kinesiology

STEPHANIE BUSS

Accounting

MACKENZIE COOLER

Audiology & Speech Pathology

TESSA GRUBBS

Kinesiology

SEDONA HANSEN

Business

BREANA JETER

Audiology & Speech Pathology

KANISHA JIMENEZ

Sociology

KEYTON KINLEY

Communications

GABRIELLE PEITSCH

Accounting

ASHA PHILLIPS

Kinesiology

BROOKE SCHUMACHER

Therapeutic Recreation

OLIVIA SCHWAMBERGER

Mathematics

STEPHANIE SPENCER

Kinesiology

ERICA TREIBER

Kinesiology

KENDRA TURNER

Sociology

CALLIE WILLIAMS

Biological Sciences



2016 Tennessee Volleyball
Tennessee Combined Team Statistics (as of Aug 18, 2017)
All matches



Overall record: 17-14 Conf: 7-11 Home: 9-3 Away: 5-9 Neutral: 3-2

#	Player	sp	Attack					Set		Serve			re	Dig			Blocking						points
			k	k/s	e	ta	pct	a	a/s	sa	se	sa/s		dig	dig/s	bs	ba	total	blk/s	be	bhe		
1	Stephanie Buss	19	22	1.16	8	53	.264	0	0.00	0	1	0.00	0	4	0.21	2	10	12	0.63	1	0	-	
2	Alyssa Andreno	92	151	1.64	51	377	.265	1	0.01	0	2	0.00	0	30	0.33	3	66	69	0.75	9	0	-	
3	Nora Reed	9	8	0.89	0	20	.400	1	0.11	0	0	0.00	0	0	0.00	0	6	6	0.67	0	0	-	
4	Asha Phillips	17	0	0.00	0	0	.000	2	0.12	1	2	0.06	1	11	0.65	0	0	0	0.00	0	0	-	
6	Brooke Schumacher	108	3	0.03	1	12	.167	51	0.47	16	23	0.15	13	353	3.27	0	0	0	0.00	0	6	-	
7	Erica Treiber	101	261	2.58	73	540	.348	7	0.07	21	38	0.21	0	63	0.62	10	97	107	1.06	12	1	-	
8	Bridgette Villano	63	2	0.03	3	10	-.100	47	0.75	15	20	0.24	11	202	3.21	0	0	0	0.00	0	2	-	
9	Raina Hembry	101	217	2.15	88	526	.245	7	0.07	1	1	0.01	1	36	0.36	8	87	95	0.94	10	0	-	
10	Breana Jeter	2	3	1.50	2	9	.111	0	0.00	0	0	0.00	0	1	0.50	0	1	1	0.50	0	0	-	
11	Sedona Hansen	101	47	0.47	10	142	.261	1130	11.19	11	61	0.11	1	298	2.95	1	39	40	0.40	15	8	-	
12	Courtney Mueller	4	0	0.00	0	2	.000	12	3.00	0	0	0.00	0	1	0.25	0	0	0	0.00	0	0	-	
13	Kanisha Jimenez	67	67	1.00	41	228	.114	17	0.25	15	36	0.22	21	112	1.67	0	20	20	0.30	1	0	-	
14	Kendra Turner	58	124	2.14	42	321	.255	4	0.07	7	12	0.12	9	51	0.88	3	27	30	0.52	3	0	-	
15	Bri Holmes	91	269	2.96	115	710	.217	5	0.05	6	13	0.07	13	78	0.86	4	21	25	0.27	2	0	-	
16	Claudia Coco	69	0	0.00	1	3	-.333	14	0.20	5	11	0.07	7	54	0.78	0	0	0	0.00	0	0	-	
17	Tessa Grubbs	89	320	3.60	114	749	.275	1	0.01	14	44	0.16	12	73	0.82	9	37	46	0.52	5	1	-	
18	Mackenzie Cooler	20	9	0.45	2	23	.304	95	4.75	2	4	0.10	0	17	0.85	0	4	4	0.20	0	3	-	
21	Britney Vallez	96	0	0.00	0	2	.000	11	0.11	6	2	0.06	15	116	1.21	0	0	0	0.00	0	0	-	
22	Kelsey Bawcombe	50	5	0.10	7	29	-.069	2	0.04	15	26	0.30	5	47	0.94	0	1	1	0.02	0	0	-	
TENNESSEE		109	1508	13.83	558	3756	.253	1407	12.91	135	296	1.24	121	1547	14.19	40	416	248.0	2.28	58	21	-	
Opponents		109	1346	12.35	613	3776	.194	1255	11.51	121	206	1.11	134	1429	13.11	60	412	266.0	2.44	49	22	-	

Team Statistics	UT	OPP
ATTACK		
Kills	1508	1346
Errors	558	613
Total Attacks	3756	3776
Attack Pct	.253	.194
Kills/Set	13.8	12.3
SET		
Assists	1407	1255
Assists/Set	12.9	11.5
SERVE		
Aces	135	121
Errors	296	206
Aces/Set	1.2	1.1
SERVE RECEPTIONS		
Errors	121	134
Errors/Set	1.1	1.2
Attempts	2172	2223
Reception Pct	.944	.940
DEFENSE		
Digs	1547	1429
Digs/Set	14.2	13.1
BLOCKING		
Block Solo	40	60
Block Assist	416	412
Total Blocks	248.0	266.0
Blocks/Set	2.3	2.4
Block Errors	58	49
Ball handling errors	21	22
ATTENDANCE		
Total	11560	18859
Dates/Avg Per Date	12/963	14/1347
Neutral site #/Avg	5/285	
Current win streak	0	-
Home win streak	2	-

Date	Opponent	Score	Score by set	Att.
Aug 26	CINCINNATI	w 3-1	25-16,25-23,22-25,25-23	1268
Aug 27	ULM	w 3-0	25-21,25-12,25-16	889
Aug 27	MIDDLE TENNESSEE	w 3-0	25-17,25-18,25-12	889
Sep 02	vs Eastern Michigan	w 3-1	25-20,25-22,19-25,30-28	78
Sep 02	at Cleveland State	L 2-3	29-27,28-26,21-25,22-25,16-18	237
Sep 03	at Kent State	w 3-1	25-22,23-25,25-13,25-14	475
Sep 09	at Western Michigan	w 3-1	25-13,24-26,25-19,25-23	701
Sep 09	vs Milwaukee	w 3-1	25-16,24-26,25-7,25-21	701
Sep 10	vs Xavier	L 1-3	23-25,22-25,25-17,21-25	570
Sep 16	vs Northern Illinois	L 0-3	23-25,22-25,20-25	42
Sep 17	vs James Madison	w 3-0	25-18,25-19,25-13	34
*Sep 17	at George Washington	w 3-0	25-22,25-17,27-25	423
*Sep 23	MISSISSIPPI STATE	L 0-3	24-26,23-25,22-25	1164
*Sep 25	GEORGIA	w 3-0	25-14,25-21,25-21	1466
*Sep 28	at South Carolina	L 2-3	26-24,12-25,25-23,22-25,13-15	1819
*Oct 02	at #5 Florida	L 1-3	21-25,25-19,22-25,20-25	693
Oct 05	at Troy	w 3-0	25-21,25-23,25-19	774
*Oct 09	at #25 Kentucky	L 0-3	16-25,18-25,16-25	1949
*Oct 14	OLE MISS	w 3-0	25-15,25-18,25-16	1103
*Oct 16	ARKANSAS	w 3-1	25-18,25-23,22-25,25-22	763
*Oct 23	at Mississippi State	L 0-3	21-25,18-25,23-25	410
*Oct 28	at Alabama	w 3-0	25-15,25-22,25-23	904
*Oct 30	AUBURN	w 3-0	25-21,25-23,30-28	817
*Nov 04	MISSOURI	L 1-3	18-25,25-23,17-25,20-25	868
*Nov 06	at Texas A&M	L 0-3	24-26,20-25,15-25	1371
*Nov 11	at Ole Miss	L 0-3	19-25,23-25,24-26	3375
*Nov 13	at Arkansas	L 0-3	23-25,22-25,20-25	1271
*Nov 16	TEXAS A&M	L 1-3	19-25,20-25,25-16,25-27	746
*Nov 20	LSU	w 3-1	25-15,25-27,26-24,25-20	874
*Nov 23	#23 KENTUCKY	w 3-1	18-25,25-19,25-17,25-17	713
*Nov 26	at #22 Missouri	L 0-3	15-25,24-26,16-25	4457

Record in 3-set matches:9-8 • Record in 4-set matches:8-4 • Record in 5-set matches:0-2

BROADCAST CHEAT SHEET



#0 KEYTON KINLEY
DS/L | FR | 5-6
Lexington, Ky.

MATCH BESTS

	Season	Career
Assists	-	-
Digs	-	-
Aces	-	-



#6 BROOKE SCHUMACHER
DS/L | JR | 5-4
Hartford, Wis.

MATCH BESTS

	Season	Career
Assists	6	Same
Digs	21	Same
Aces	2	Same



#12 GABRIELLE PEITSCH
MH | FR | 6-2
Ellicott City, Md.

MATCH BESTS

	Season	Career
Kills	-	-
Attacks	-	-
Hit%	-	-
Tot. Blocks	-	-



#19 STEPHANIE SPENCER
OH | JR | 6-1
North Canton, Ohio

MATCH BESTS

	Season	Career
Kills	-	22*
Aces	-	1*
Digs	-	18*
Tot. Blocks	-	5*



#1 STEPHANIE BUSS
MB | SR | 6-1
Sioux Falls, S.D.

MATCH BESTS

	Season	Career
Kills	9	Same
Attacks	18	Same
Hit%	.500	Same
Tot. Blocks	6	Same



#7 ERICA TREIBER
MH | JR | 6-1
Unionville, Mich.

MATCH BESTS

	Season	Career
Kills	17	Same
Attacks	40	Same
Hit%	.636	.875
Tot. Blocks	8	10



#13 KANISHA JIMENEZ
OH/RS | SR | 6-1
Toa Baja, Puerto Rico

MATCH BESTS

	Season	Career
Kills	9	22
Aces	3	4
Digs	16	20
Tot. Blocks	3	7



#28 OLIVIA SCHWAMBERGER
MH | FR | 6-3
Cincinnati, Ohio

MATCH BESTS

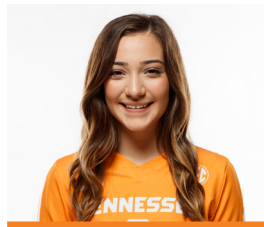
	Season	Career
Assists	-	-
Digs	-	-
Aces	-	-
Tot. Blocks	-	-



#2 ALYSSA ANDRENO
MH | SO | 6-2
Stafford, Va.

MATCH BESTS

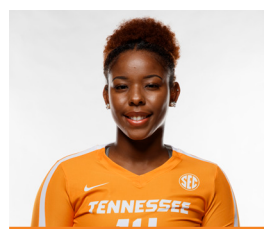
	Season	Career
Kills	16	Same
Attacks	30	38
Hit%	.667	Same
Tot. Blocks	8 (twice)	Same



#8 CALLIE WILLIAMS
S | FR | 5-9
Waco, Texas

MATCH BESTS

	Season	Career
Assists	-	-
Digs	-	-
Aces	-	-
Kills	-	-



#14 KENDRA TURNER
OH | SR | 6-1
LaPlace, La.

MATCH BESTS

	Season	Career
Kills	13	23
Attacks	29	52
Hit%	.462	Same
Tot. Blocks	6	Same



#3 MADISON COULTER
OH | FR | 5-11
Maryville, Tenn.

MATCH BESTS

	Season	Career
Kills	-	-
Attacks	-	-
Hit%	-	-
Tot. Blocks	-	-



#10 BREANA JETER
OH | R-SO | 6-1
Solon, Ohio

MATCH BESTS

	Season	Career
Kills	2	Same
Attacks	6	Same
Hit%	.167	Same
Tot. Blocks	1	Same



#17 TESSA GRUBBS
OH | SO | 6-3
Tega Cay, S.C.

MATCH BESTS

	Season	Career
Kills	23	Same
Attacks	58	Same
Digs	7	Same
Tot. Blocks	6	Same



#4 ASHA PHILLIPS
DS | SO | 5-5
Murfreesboro, Tenn.

MATCH BESTS

	Season	Career
Digs	5	Same
Assists	2	Same
Aces	1	Same



#11 SEDONA HANSEN
S | SO | 5-8
Wrightwood, Calif.

MATCH BESTS

	Season	Career
Assists	56	Same
Digs	20	Same
Aces	2	Same
Kills	5	Same



#18 MACKENZIE COOLER
S | SR | 6-1
Ridgeland, S.C.

MATCH BESTS

	Season	Career
Assists	40	41*
Digs	9	12*
Aces	1	3*
Tot. Blocks	3	4*

 - STARTERS LAST MATCH

 - LIBERO LAST MATCH

- * at Charleston (Cooler)
- * at Georgia Southern (Spencer)